

Mapping Shoreline Conditions

Webinar:

Engaging the Community for Sustainable
Shorelines

August 1st, 2024



VIMS | WILLIAM & MARY
VIRGINIA INSTITUTE OF MARINE SCIENCE
CENTER FOR COASTAL RESOURCES MANAGEMENT

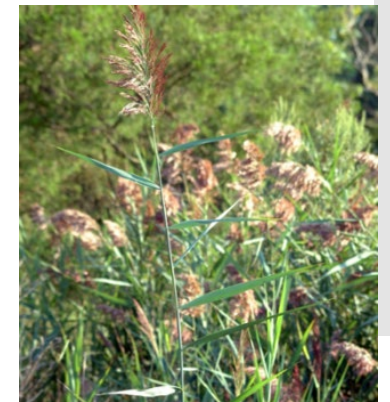
Shoreline and Tidal Marsh Inventory

-Purpose-

Geospatial dataset developed as a resource for assessing conditions along the tidal shoreline.

- *Provides important **baseline information** to support shoreline management and improve the decision-making capacity of many stakeholders.*
- *These data are also required to run the **VIMS Shoreline Management Model (SMM)**, which defines Shoreline Best Management Practices (BMPs) along tidal shorelines.*
- *It serves as key **input data** for running **SCHISM** (Semi-implicit Cross-scale Hydroscience Integrated System Model) the official model adopted by EPA's Chesapeake Bay Program for **assessing water quality and monitoring restoration efforts in the Bay.***

Shoreline conditions included in the inventories





(A) Bulkhead

(B) Groins

(C) Riprap

(D) Breakwater

Virginia Coastal Resources Tool (VCRT)

Shoreline and Tidal Marsh Inventory Products



Center for Coastal Resources Management (CCRM)

SHORELINE & TIDAL MARSH INVENTORY
Virginia
Maryland
Delaware
North Carolina

Home / ... / Shoreline & Tidal Marsh Inventory / Virginia

Virginia Shoreline & Tidal Marsh Inventory

The Virginia Shoreline and Tidal Marsh Inventory is a series of reports that describe the condition of tidal shorelines for individual localities in the Commonwealth of Virginia. This inventory series started with historic reports produced in the 1970's. It also includes contemporary digital inventory updates generated from 1998 to the present using a combination of Geographic Information Systems (GIS), Global Positioning System (GPS), and remote sensing technology.



Virginia Coastal Resources Tool provides visualization of shoreline and tidal marsh inventory data and statistics

Data Request Form - download GIS data for the entire Virginia Shoreline Inventory (218MB .zip) - includes Virginia Tidal Marsh Inventory

Locality Portals

Clicking on a locality below will take you to a portal with links to shoreline and tidal marsh inventory reports, summary tables and GIS data for downloading.

- [Accomack County](#)
- [City of Alexandria](#)
- [Arlington County](#)

Virginia has 8,916 miles of tidal shoreline...

Not including Eastern Shore seaside marsh islands



EXPLORE YOUR COASTAL COMMUNITY



Virginia Coastal Viewer

Explore shoreline conditions throughout coastal Virginia. View animated sea level rise scenarios through 2100; compare 2 different years of orthoregistry from Virginia Base Mapping Program; view reference layers that include bathymetry, conservation lands and easements, submerged aquatic vegetation (SAV) and more. Shoreline Inventory layers and Shoreline Management layers have detailed pop-up descriptions.



Dashboards

There are three different dashboards: Locality Shoreline Inventory, River System Shoreline Inventory, and Shoreline Management Model (SMM). Summary data is displayed by locality, or river system (inventory only). Shoreline Inventory displays summary information that includes tidal marsh types, structures such as docks and breakwaters, riparian land use, and more. The SMM dashboard displays best management practice recommendations for shoreline conditions.

Virginia has 8,916 miles of tidal shoreline...

Not including Eastern Shore seaside marsh islands



EXPLORE YOUR COASTAL COMMUNITY



Virginia Coastal Viewer

Explore shoreline conditions throughout coastal Virginia. View animated sea level rise scenarios through 2100; compare 2 different years of orthoregistry from Virginia Base Mapping Program; view reference layers that include bathymetry, conservation lands and easements, submerged aquatic vegetation (SAV) and more. Shoreline Inventory layers and Shoreline Management layers have detailed pop-up descriptions.




Dashboards

There are three different dashboards: Locality Shoreline Inventory, River System Shoreline Inventory, and Shoreline Management Model (SMM). Summary data is displayed by locality, or river system (inventory only). Shoreline Inventory displays summary information that includes tidal marsh types, structures such as docks and breakwaters, riparian land use, and more. The SMM dashboard displays best management practice recommendations for shoreline conditions.

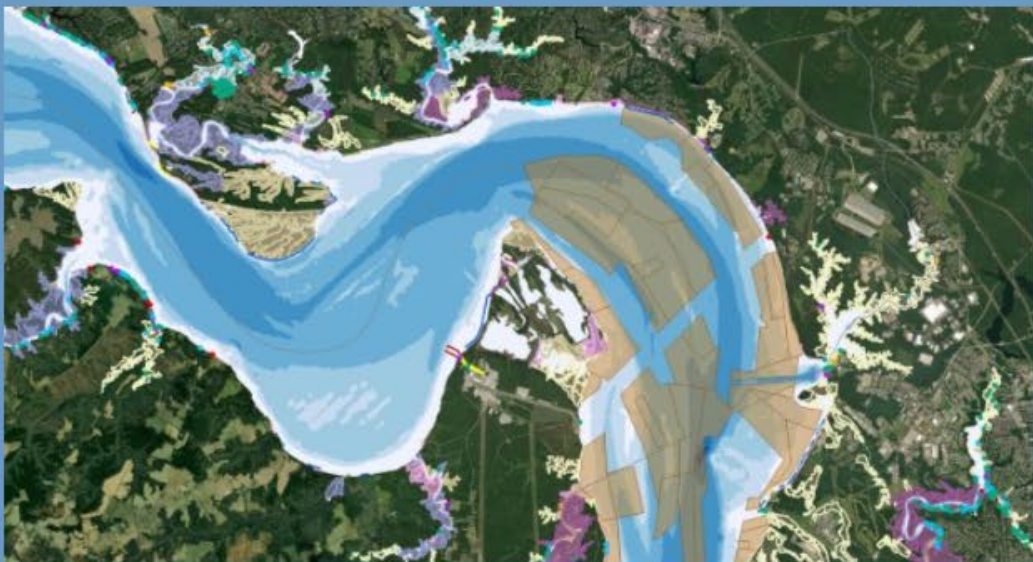


Virginia has 8,916 miles of tidal shoreline...

Not including Eastern Shore seaside marsh islands

<p>Natural Shoreline ⓘ</p>  <p>7,858 miles</p>	<p>Tidal Marsh Shoreline ⓘ</p>  <p>6,237 miles</p>	<p>Defended Shoreline ⓘ Living Shorelines</p>  <p>68 miles</p>	<p>Defended Shoreline ⓘ All (includes living shorelines)</p>  <p>1,058 miles</p>
--	---	--	--

EXPLORE YOUR COASTAL COMMUNITY



Virginia Coastal Viewer

Explore shoreline conditions throughout coastal Virginia. View animated sea level rise scenarios through 2100; compare 2 different years of orthoregistry from Virginia Base Mapping Program; view reference layers that include bathymetry, conservation lands and easements, submerged aquatic vegetation (SAV) and more. Shoreline Inventory layers and Shoreline Management layers have detailed pop-up descriptions.



Orshore Protection Structures
43.3 miles

- Submerged 43%
- Docks 4%
- Shoreland 36
- Rocky 4%
- Structural 1%
- Wood 1%

Riparian Land Use/Land Cover

Category	Value
Agriculture	0.4
Bar	0.7
Commercial	0.5
Forest	34.4
Governmental	0.3
Grass	0.3
Industrial	0.1
Residential	14.9
Waterbody	0.3
Wetland	0.3
Woods	0.3

Tidal Marsh Community Types

Community Type	Value
Submerged vegetative marsh	302.2
Submerged high marsh	7.7
Wetland	2.7
Bar	0.1
Grass	0.1
Governmental	0.1
Industrial	0.1
Residential	0.1
Waterbody	0.1
Wetland	0.1

Unsurveyed Tidal Marsh
775.1 acres

Dashboards

There are three different dashboards: Locality Shoreline Inventory, River System Shoreline Inventory, and Shoreline Management Model (SMM). Summary data is displayed by locality, or river system (inventory only). Shoreline Inventory displays summary information that includes tidal marsh types, structures such as docks and breakwaters, riparian land use, and more. The SMM dashboard displays best management practice recommendations for shoreline conditions.



Virginia has 8,916 miles of tidal shoreline...

Not including Eastern Shore seaside marsh islands

<p>Natural Shoreline ⓘ</p>  <p>7,858 miles</p>	<p>Tidal Marsh Shoreline ⓘ</p>  <p>6,237 miles</p>	<p>Defended Shoreline ⓘ Living Shorelines</p>  <p>68 miles</p>	<p>Defended Shoreline ⓘ All (includes living shorelines)</p>  <p>1,058 miles</p>
--	---	--	--

EXPLORE YOUR COASTAL COMMUNITY



Virginia Coastal Viewer

Explore shoreline conditions throughout coastal Virginia. View animated sea level rise scenarios through 2100; compare 2 different years of orthoregistry from Virginia Base Mapping Program; view reference layers that include bathymetry, conservation lands and easements, submerged aquatic vegetation (SAV) and more. Shoreline Inventory layers and Shoreline Management layers have detailed pop-up descriptions.

Select a Locality

- Beaufort 4819 2018
- Hampton City 1851 2011
- Hampton County 12149 2017
- Henrico County 4916 2017
- Hopewell City 1111 2016
- Isle of Wight County 23013 2017
- James City County 45124 2018
- King and Queen County 17724

Living Shoreline 1.5 miles

Beach Shoreline 12.1 miles

Marina Shoreline 3.8 miles

Defended and Natural Shoreline

Defended 30%
Natural 70%

Tidal Marsh Shoreline 110.9 miles

Tidal Marsh Area 2,324 acres

Tidal Marsh Community Types

Salicornia vegetative marsh	88.2
Tidal emergent marsh	7.7
Beach Nourishment	2.7
Subluna	1.1
Big cordgrass	0
Grass	0
Area not in community	0
High marsh	11.1
Yellow Pond	0
Penetration	0
Shoreline	141.2

Unsurveyed Tidal Marsh 775.1 acres

Orshore Protection Structures 43.3 miles

Submerged	45%
Docks	4%
Shoreland	3%
Rock	45%
Structural	1%
Wood	1%

Riparian Land Use/Land Cover

Agriculture	0.4
Bar	0.7
Commercial	0.5
Forest	34.4
Governmental	0.3
Grass	0.3
Industrial	0.1
Marina	14.9
Residential	31.3
Water	27.3

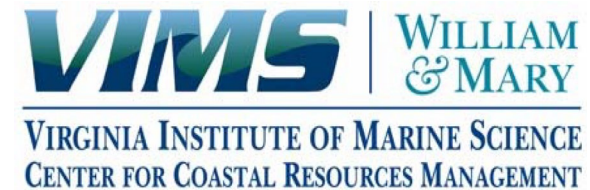
Dashboards

There are three different dashboards: Locality Shoreline Inventory, River System Shoreline Inventory, and Shoreline Management Model (SMM). Summary data is displayed by locality, or river system (inventory only). Shoreline Inventory displays summary information that includes tidal marsh types, structures such as docks and breakwaters, riparian land use, and more. The SMM dashboard displays best management practice recommendations for shoreline conditions.

Shoreline & Tidal Marsh Inventory

UPDATE
IN
PROGRESS

Project: Advancing the use of spatial data and coastal modeling in implementing adaptive management to support coastal community resilience.



New Iteration of the Shoreline & Tidal Marsh Inventory

Main Objectives

1. ***Enhanced shoreline and riparian zone Inventory*** for selected localities.
2. ***Upgrade the Shoreline Management Model (SMM)*** (output: shoreline best management practices).
3. ***Map the Location of Marsh Migration Corridors.***
4. ***Develop a Community-Science App.***

New Shoreline Inventory Features

(update in progress)



Current Shoreline Inventory

- Riparian Land Use
- Bank Height
- Hardened Shoreline Structures
- Recreational Structures
- Tidal Marshes
- Beaches

New Shoreline Inventory

- Riparian Land Use
- Bank height
- **Bank Slope**
- Hardened Shoreline Structures
- **Living Shorelines**
- Recreational Structures
- **Navigational Channels**
- Tidal Marshes
- **Marsh Migration Corridors**
- Beaches & **Dunes**

Community Science App

MapMyShore



Objective :


Allow the community to assist VIMS-CCRM in collecting and ground truthing shoreline inventory features critical to natural and cultural resources.





Virginia has 8,916 miles of tidal shoreline...

Not including Eastern Shore seaside marsh islands

<p>Natural Shoreline ⓘ</p>  <p>7,858 miles</p>	<p>Tidal Marsh Shoreline ⓘ</p>  <p>6,237 miles</p>	<p>Defended Shoreline Living Shorelines ⓘ</p>  <p>68 miles</p>	<p>Defended Shoreline All (includes living shorelines) ⓘ</p>  <p>1,058 miles</p>
--	---	--	--

EXPLORE YOUR COASTAL COMMUNITY



Virginia Coastal Viewer

Explore shoreline conditions throughout coastal Virginia. View animated sea level rise scenarios through 2100; compare 2 different years of orthoregistry from Virginia Base Mapping Program; view reference layers that include bathymetry, conservation lands and easements, submerged aquatic vegetation (SAV) and more. Shoreline Inventory layers and Shoreline Management layers have detailed pop-up descriptions.

Select a Locality

- Beaufort 4819 2014
- Hampton City 1851 2011
- Hampton County 12149 2017
- Henrico County 4016 2017
- Highland County 4121 2016
- Isle of Wight County 23013 2017
- James City County 45124 2014
- King and Queen County 17724

Living Shoreline 1.5 miles

Beach Shoreline 12.1 miles

Marina Shoreline 3.8 miles

Defended and Natural Shoreline

Tidal Marsh Shoreline 110.9 miles

Tidal Marsh Area 2,324 acres

Orshore Protection Structures 43.3 miles

Riparian Land Use/Land Cover

Tidal Marsh Community Types

Unsurveyed Tidal Marsh 775.1 acres

Dashboards

There are three different dashboards: Locality Shoreline Inventory, River System Shoreline Inventory, and Shoreline Management Model (SMM). Summary data is displayed by locality, or river system (inventory only). Shoreline Inventory displays summary information that includes tidal marsh types, structures such as docks and breakwaters, riparian land use, and more. The SMM dashboard displays best management practice recommendations for shoreline conditions.

DASHBOARDS



GIS Data

Locality Shoreline Inventory

River System Shoreline Inventory

Shoreline Management Model

Community Science Data

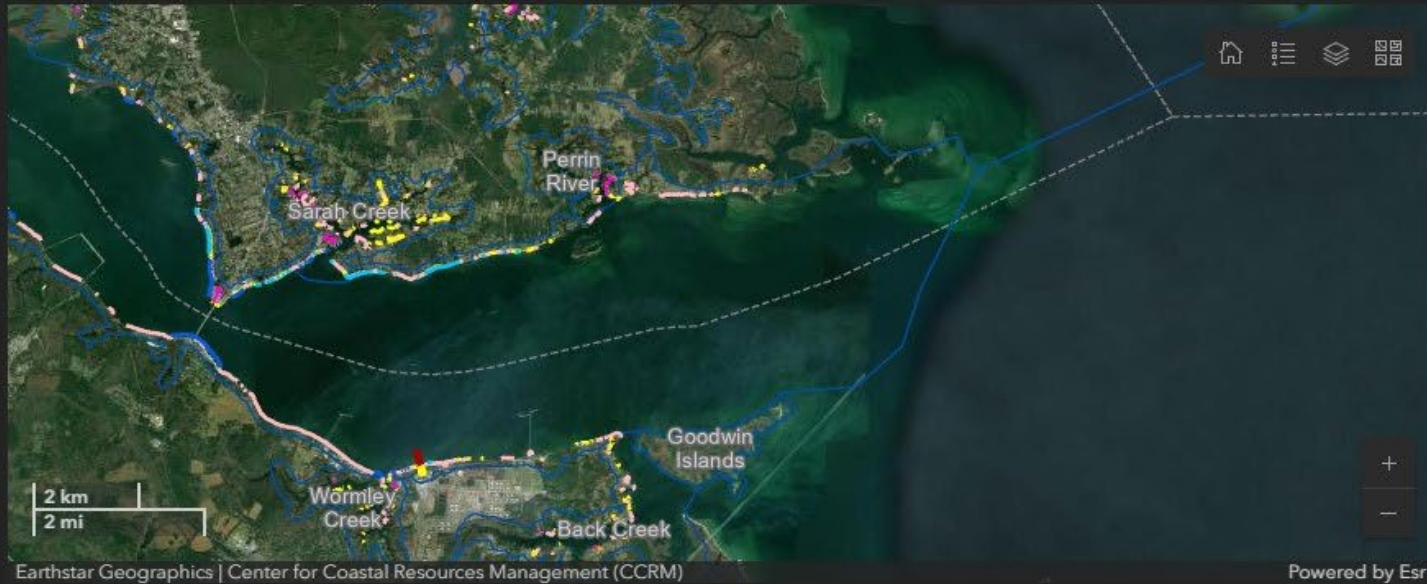
Select a Locality

Accomack County	Shoreline Miles: 708.78	2016
Alexandria City	Shoreline Miles: 8.47	2010
Arlington County	Shoreline Miles: 15.44	2018
Caroline County	Shoreline Miles: 53.93	2018
Charles City County	Shoreline Miles: 325.97	2013
Chesapeake City	Shoreline Miles: 288.73	2016
Chesterfield County	Shoreline Miles: 160.66	

Living Shoreline
68.3 miles

Beach Shoreline
365.2 miles

Marina Shoreline
53.6 miles



Coming SOON!

Defended and Natural Shoreline



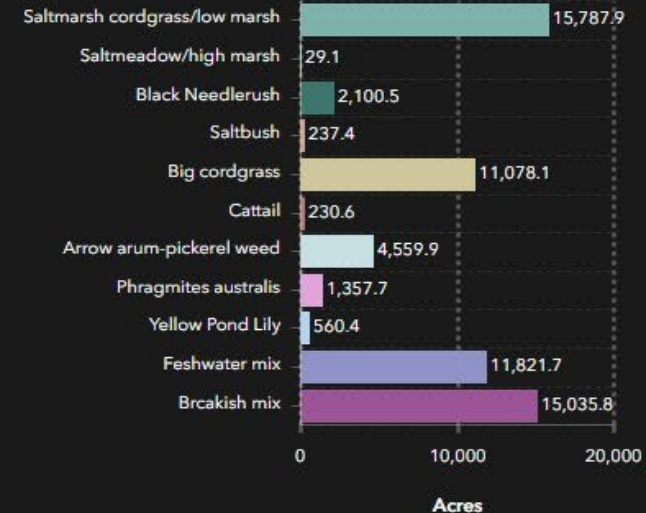
Defended 12%
 Natural 88%

Tidal Marsh Shoreline
7,670.2 miles

Includes Northampton seaside marshes

Tidal Marsh Area
195,035.7 acres

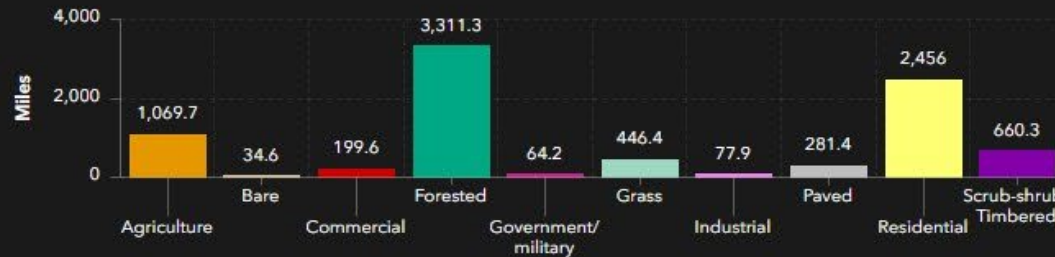
Tidal Marsh Community Types



Onshore Protection Structures
921.3 miles



Riparian Land Use/Land Cover



Unsurveyed Tidal Marsh
132,236.6 acres

Onshore Offshore Access Structures

Bar Chart Pie Chart

Community Science App Demo

MapMyShore



MapMyShore Version 1.0

VIMS | **WILLIAM
& MARY**

VIRGINIA INSTITUTE OF MARINE SCIENCE
CENTER FOR COASTAL RESOURCES MANAGEMENT

Welcome to MapMyShore!



*Partnering with the Community to
Keep Virginia's Shoreline Inventory Up
to Date!*

▶ [To get started...Read Disclaimer](#)

▶ [About MapMyShore](#)

▶ [App Instructions](#)

